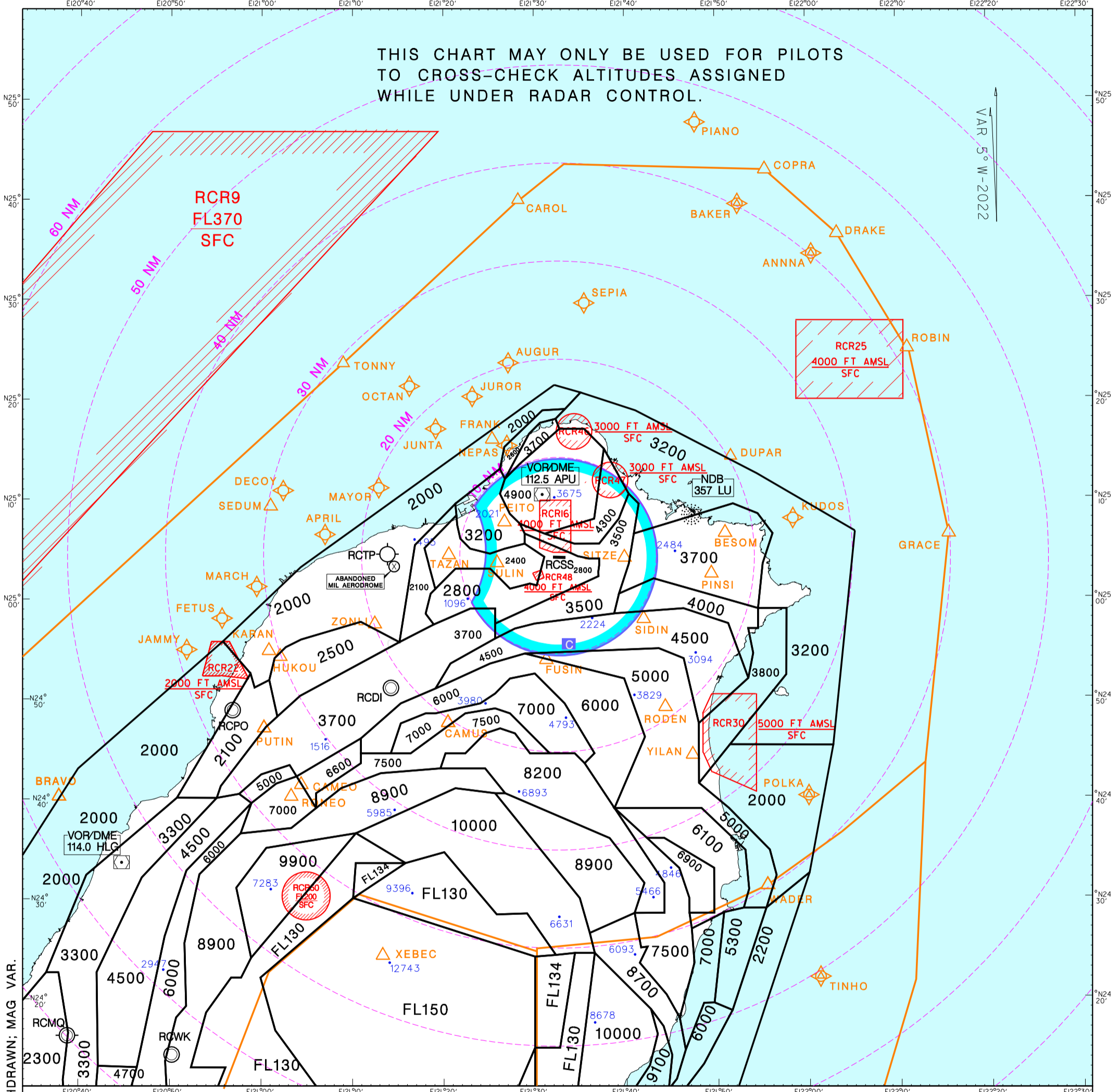


航管監視最低高度圖
ATC Surveillance
Minimum Altitude Chart

AD ELEV.
RCSS 18 FT

TAIPEI APP	SONGSHAN TOWER
125.1 119.7	118.1
119.6	236.6
228.0 251.3	ATIS 127.4 341.0

臺北/松山機場
Taipei/Songshan Aerodrome



CHANGES: RCR49 COMPLETELY WITHDRAWN; MAG VAR.

NOTE

1. Range marks are centered at Songshan RADAR (250421.49N 1213302.54E).
2. Minimum altitudes are calculated taking into account of minimum clearance above terrain/obstacles. Radar control service cannot be provided to aircraft below the applicable minimum. However, aircraft at designated altitude in relevant sector is not assured of radar contact.
3. Altitudes, Levels, Heights are in feet.
4. Only significant spot heights are shown.
5. LOSS OF COMMUNICATION
 - a. SQUAWK 7600 immediately, and
 - b. follow AIP ENR 1.6.4 "Radio Communication Failure Procedures."

Transition level: FL130
Transition altitude: 11,000ft